



IMPACT
Herbicide

The Power You Want—The Results You Need

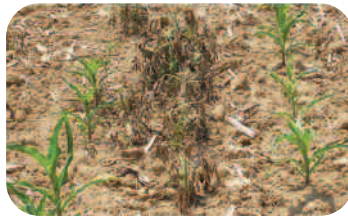
Proven Performance—The Standard in Corn Safety™

IMPACT puts corn growers in control. It's the solution for hard-to-control broadleaf weeds. And **IMPACT** is the post-emergence partner in Roundup Ready PLUS™ program, which allows growers to qualify for up to \$3.50 per acre incentive. The combination of **IMPACT**® and Roundup® brand herbicides provides even more effective and comprehensive results.

IMPACT
Herbicide



IMPACT: Waterhemp



IMPACT: Giant Ragweed



IMPACT: Lambsquarters



IMPACT: Velvetleaf



IMPACT: Marehail



IMPACT: Kochia

- Controls tough broadleaf weeds and annual grasses, too
- Labeled on all corn hybrids with Roundup Ready 2 Technology
- Second mode of action for resistance management
- Wide application window for tank-mixing with Roundup
- Quick broadleaf weed burndown reduces competitive stress on corn

Proven Performance on Broadleaf and Grass Weeds

Broadleaf Weeds Controlled

- Amaranth, Palmer and Powell
- Burcucumber
- Carpetweed
- Chickweed, Common
- Cocklebur, Common
- Dandelion*
- Galinsoga, Hairy
- Henbit
- Horseweed (Marehail)
- Jimsonweed
- Kochia
- Lambsquarters, Common
- Lettuce, Prickly
- Mallow, Common and Venice*
- Morningglory sp.
- Mustard sp.
- Nightshade, Black, Eastern Black and Hairy
- Pigweed, Prostrate, Redroot, Smooth and Tumble
- Pusley, Florida
- Ragweed, Common and Giant
- Shepardspurse
- Sida, Prickly
- Smartweed, Ladysthumb and Pennsylvania
- Sunflower, Volunteer and Wild
- Thistle, Canada* and Russian
- Velvetleaf
- Waterhemp, Common and Tall

* Partial control

Grass Weeds Controlled

- Barnyardgrass
- Crabgrass, Large and Smooth
- Cupgrass, Woolly**
- Foxtail, Giant and Green
- Foxtail, Yellow**
- Goosegrass
- Johnsongrass, Seedling**
- Millet, Wild-Proso
- Panicum, Fall**
- Shattercane*
- Signalgrass, Broadleaf**

* Partial control

Partial control at with **IMPACT at 0.75 fl oz/A.

For control of these grass species use **IMPACT** at 1.0 fl oz/A under a supplemental use label.



AMVAC



Proudly produced in the U.S.A. by AMVAC

IMPACT is a registered trademark and YES, Yield Enhancement Solutions and The Standard in Corn Safety are trademarks of AMVAC Chemical Corporation. PowerMAX, WeatherMAX, Roundup Ready 2 and Roundup Ready Plus Technology are trademarks of Monsanto Technology LLC. Always read and follow label directions and use precautions. ©2013 AMVAC Chemical Corporation. Printed in the U.S.A. AV-IMPACT: 2013-1

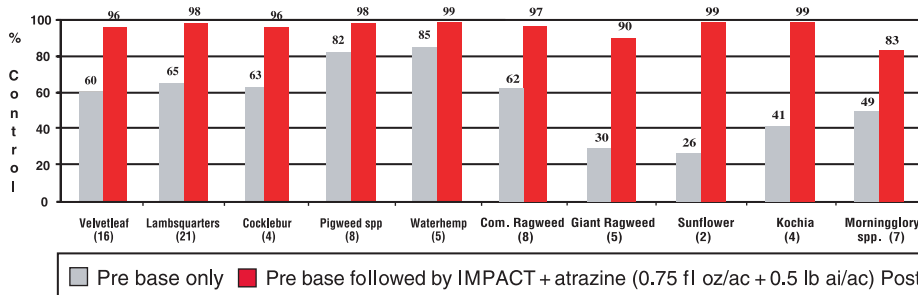
IMPACT[®]

Herbicide

Power that Yields

Proven Performance on Broadleaf Weeds

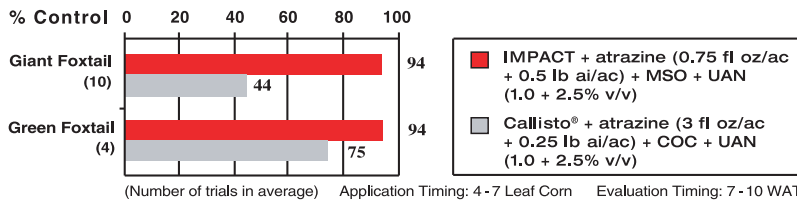
IMPACT: Broadleaf Weed Control in a Two-Pass Program — University Trials
Postemergence Use Following Pre Residual Treatments



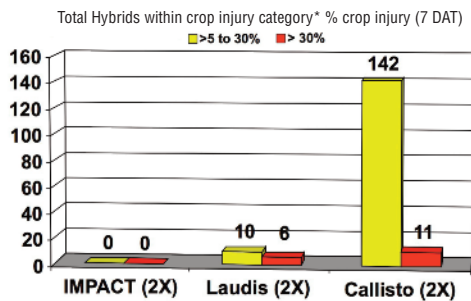
Adjuvants: IMPACT with MSO + UAN 1.0 + 2.5% v/v Post Application Timing: 3-6 Leaf Corn Evaluation Timing: 5-10 WAT (Number of trials in average)
Pre Base Treatments: Outlook, Dual II Magnum, Bicep Lite II Magnum or Guardsman at 0.67-1X rates

Proven Performance on Grass Weeds

IMPACT: Grass Control — Post Applications With No Pre Base Treatment



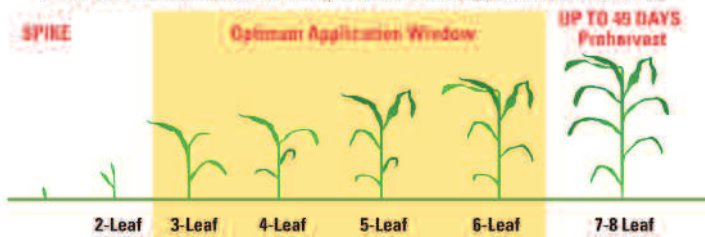
The Standard in Corn Safety™



2009 University of Illinois Sweet Corn Tolerance Trial

Sweet Corn at V4-V5 stage at application
 • IMPACT (2X) = 1.5 fl oz/a, Laudis (2X) = 6.0 fl oz/a and Callisto (2X) = 6.0 fl oz/a
 • Spray adjuvants = COC (1% v/v) and UAN (2% v/v) with each treatment
 • *Hybrids not included in table had injury ratings of 0-5%

IMPACT: Exceptional Early to Late-Post Application Flexibility



IMPACT PLUS ROUNDUP HERBICIDES:

Mixing Procedure

With spray tank at least ½ full of water, start and maintain gentle agitation through the mixing procedure and continue filling process, adding products in following order:

- Add AMS and agitate until it is completely dissolved
- If included in this mixture: add atrazine
- Add IMPACT herbicide
- If included in mixture: add drift retardant
- Add Roundup PowerMAX or WeatherMAX
- Maintain gentle agitation until mixture is sprayed out – If agitation is stopped and mixture is allowed to settle, use thorough agitation to re-suspend before spraying

Application Methods

- Recommended spray volume is 10 to 20 gallons per acre
- Increase spray volume to ensure good coverage on larger weeds
- Apply over the top of corn from emergence to V8 or 30 inch height
- For best performance make application before weeds exceed 4 inches in height or compete with corn
- Drop nozzles are recommended for optimum spray coverage of weeds when corn is 24 to 30 inches tall
- Drop nozzles aligned to avoid application in whorl of corn must be used when treating 30-48 inch tall corn
- Application must be made at least 50 days prior to harvest

Recommended Tank-Mix on Conventional & Specialty Corn

- IMPACT at 0.75 to 1.0 fl oz/acre
- Atrazine at local use rate (up to 12 inch corn)*
- MSO at 1 gal/100 gal
- Nitrogen Fertilizer
AMS at 8.5 to 17 lb/100 gal of water (or liquid equivalent)
OR—UAN (28-34%) at 2.5% v/v (3 pt/acre @ 15 gal/acre)
- Target 2 to 4 inch weed height

IMPACT[®] plus Roundup[®] Tank-Mix Recommendation

Following a Preplant or PRE herbicide, use the following tank-mix in the second pass:

- Roundup PowerMAX[®] at standard use rate
- IMPACT at 0.75 fl oz/A
- Atrazine at local use rate (up to 12 inch corn)*
- AMS at 8.5 to 17 lb/100 gal (or liquid equivalent)
- MSO at 2 qt/100 gal
- Target 2 to 4 inch weed height

* Atrazine rate dependent on geography and rotational cropping.



Proudly produced in the U.S.A. by AMVAC