

MANA Parallel[®] Plus

HERBICIDE

Herbicide

ACTIVE INGREDIENTS

Metolachlor 28.9%
Atrazine 30.0%

FORMULATION

SC

EPA REGISTRATION

66222-132

MODE OF ACTION

Photosynthesis & VLCFAs inhibitor

TIMING

Preemergence,
early post emergence*

BRAND ALTERNATIVE

Bicep II Magnum[®]

GROUP NUMBER

5 and 15

RESTRICTED USE

Yes

SIGNAL WORD

Caution

PACKING INFORMATION

2 x 2.5 gal jugs
270 gal totes
Bulk

For grass and small-seeded broadleaf weed control in corn and sorghum.



MANA Parallel[®] Plus controls the toughest competitive weeds, including glyphosate-resistant waterhemp. It also provides an excellent grass and small-seeded broadleaf foundation for a two-pass program in Roundup Ready[®] or conventional corn, as well as Concep[®] treated grain sorghum.

KEY PERFORMANCE BENEFITS

- **Application:** Can be used as a preplant surface application, preplant incorporated, preemergent at planting or as an early post emergent.
- **Flexible:** MANA Parallel Plus can be used with conventional varieties as well as Roundup Ready, Clearfield[®], and LibertyLink[®] corn seed varieties.
- **Benoxacor Safener:** Includes the latest safener technology permitting use on corn and Concep treated sorghum.
- **Economical:** Protects your corn investment with proven performance at the right price.
- **Confidence:** Consistent, profitable results with trusted brands and a trusted company.



Call Toll Free 866-406-MANA(6262) or visit us online at www.manainc.com

*Post Application - Corn only, see package label for details

 **MANA**
Crop Protection

FORMULATION BREAKTHROUGH!

“State of the Art” formulation exhibits the following characteristics:

- Suspension maintained even in cold weather
- Remains stable in storage from season to season
- Handling and mixing made easy with minimum bulk recirculation required
- Includes latest safener technology permitting use on corn and Concep treated grain sorghum
- Compatible in water and liquid nitrogen solutions

IMPROVED FORMULATION – SAME WEED CONTROL



Production: Packaged in St. Joseph, MO
Packaging: 2 x 2.5 gal, 270 gal totes, Bulk

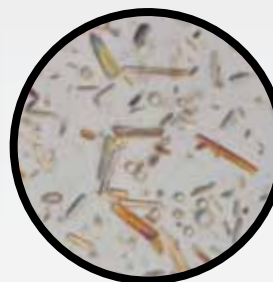


Parallel Plus



Bicep II Magnum

Note the suspension stability of Parallel Plus vs Bicep II Magnum. Time Lapse: 48 hours



100 x

A depiction of the globular nature of metolachlor particles among rod-like atrazine shards. Note how the particles of like and unlike live in harmony but do not coalesce, which is the flaw of all other competitive metolachlor/ atrazine products.

QUALITY PRODUCTS. COMPETITIVE PRICES.

MANA's proven insecticides, fungicides, herbicides, PGRs and harvest aids are manufactured to the highest standards and value priced to optimize the farm's profitability. MANA provides best-in-class formulations, regulatory capabilities, extensive field testing and research, and a science-based approach to defend and maintain vital active ingredients. Our area business management teams throughout the U.S. support the distributors, retailers, crop consultants and agronomists who are part of the supply chain today's producers and farm managers rely on for localized expertise.

Visit us online at www.manainc.com



Makhteshim Agan of North America, Inc. | 4515 Falls of Neuse Road, Suite 300, Raleigh, NC 27609

ALWAYS READ AND FOLLOW LABEL DIRECTIONS ©2011. Parallel® of MANA (Makhteshim Agan of North America, Inc.). **Parallel Plus and Bicep II Magnum are Restricted Use Pesticides.** Bicep II Magnum® and Concep® of Syngenta Group Company. Roundup Ready® of Monsanto Co. Clearfield® of BASF. LibertyLink® of Bayer CropScience. 49PPLSSH0911B