

*Trademark of Dow AgroSciences LLC

Dow AgroSciences is advancing one of the most trusted solutions you rely on.

Now, Lorsban[®] insecticide is available in a new formulation called Lorsban[®] Advanced Insecticide. It provides all the benefits of Lorsban[®]-4E insecticide in a **low odor, water based** formulation.

- Easy to recommend, handle, and apply
- 24 hour re-entry interval
- Apply by air or ground application
- Economical and broad spectrum insect control

Corn Insects (Post)

Field Corn, Sweet Corn, Seed Corn¹

Stalk Borers	1 - 2 pints/acre
Cutworms (all species)	1 - 2 pints
Armyworms	1 - 2 pints
Aphids	1 - 2 pints
Flea Beetles	1 - 2 pints
Grasshoppers	1/2 - 1 pint
European Corn Borer, 1st Gen ²	1 - 2 pints
European Corn Borer, 2nd Gen	1 1/2 - 2 pints
Corn Rootworm Beetles	1 - 2 pints

PRE-HARVEST INTERVAL = 21 DAYS

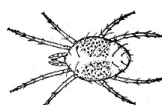
Soybean Insects

Bean Leaf Beetle	1 - 2 pints/acre
Soybean Aphid	1 - 2 pints
Armyworms	1 - 2 pints
Grasshoppers	1/2 - 1 pint
Green Cloverworm	1/2 - 1 pint
Spider Mites	1 - 1 1/2 pints

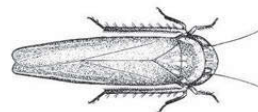
PRE-HARVEST INTERVAL = 28 DAYS



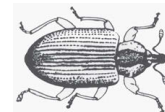
Soybean Aphid Adult



Two Spotted Spider Mite



Potato Leafhopper



Alfalfa Weevil Adult

Alfalfa Insects

Potato Leafhoppers ³	1/2 - 1 pint/acre
Grasshoppers	1/2 - 1 pint
Alfalfa Weevil (larvae and adult)	1 - 2 pints
Alfalfa Blotch Leafminer	1 - 2 pints
Aphids	1 - 2 pints
Armyworms	1 - 2 pints
Cutworms (all species)	1 - 2 pints

PRE-HARVEST INTERVALS: 1/2 pint = 7 days, 1 pint = 14 days, >1 pint = 21 days

Lorsban[®] Advance may be tank-mixed with glyphosate-containing products with the resultant tank mix applied to glyphosate-tolerant soybeans and field corn.

GRASSHOPPERS: 1/2 pt for 1/2" grasshopper, 3/4 pt. for 3/4" grasshoppers, 1 pt for 1" grasshoppers

¹ Do not apply in tank mixes with Steadfast or Lighting herbicides.
² 1st ECB, directed into whorls.

³ For heavy infestations of potato leafhoppers in alfalfa, a higher application rate may be required, i.e. 3/4 to 1 pint/acre.

®™Trademark of Dow AgroSciences LLC.

Always read and follow label directions.

Lorsban-4E and Lorsban Advanced are federally Restricted Use Pesticides.

Do not aerially apply in Mississippi.



M01-368-005 (07/11) DAS 010-41133