



EDITION® TANKMIX Herbicide—The flexible choice for postemergence control of broadleaf weeds and burndown programs

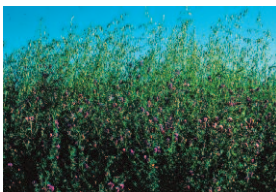
EDITION® TANKMIX Herbicide, with the active ingredients thifensulfuron and tribenuron, is used for postemergence control of numerous broadleaf weeds and as part of wild oat or kochia control programs. A great tank-mix partner with other postemergent herbicides, **EDITION TANKMIX** may be used in burn-down programs on wheat, oats, barley, triticale and fallow.

EDITION TANKMIX is an economical equivalent to Affinity® TankMix herbicide. For best results, apply the products to young, actively growing weeds. The use rate will depend on the weed spectrum and size of weed at time of application.



Common Groundsel

Photo courtesy of John D. Byrd,
University of Mississippi, Bugwood.org



Wild Oat

Photo courtesy of Steve Dewey,
Utah State University, Bugwood.org



Curly Dock

Photo courtesy of Steve Dewey,
Utah State University, Bugwood.org



Common Ragweed

Photo courtesy of James H. Miller
and Ted Bodner, Southern Weed
Science Society, Bugwood.org

For Use On: Wheat (including durum), oats, barley, triticale and fallow

Formulation: WDG (water dispersible granule)

Packaging: 48 oz. containers, 8 per case

Active Ingredient: Thifensulfuron and tribenuron

Mode of Action: ALS Inhibitor

Use Rates: 0.6 oz. – 1.0 oz. per acre depending on use site and target weeds

Signal Word: Caution

Weeds Controlled*

- Curly dock
- Groundsel
- Ragweed
- Wild Oat

**See label for complete listing and additional weeds controlled with tank-mix partners.*

Application Timing

EDITION TANKMIX is absorbed through the foliage of plants, rapidly inhibiting the growth of susceptible weeds. Applications to wheat (including durum) barley, winter oat and triticale should occur after the 2-leaf stage, but before the flag leaf is visible. Do not harvest within 45 days of last application.

EDITION TANKMIX can be applied on spring oats after the crop is in the 3-leaf stage but before joining. Do not use on the Ogle, Porter or Premier varieties of spring oats as crop injury can occur. When treating fallow acres, apply the product in the spring or fall when the majority of the weeds have emerged and are actively growing. See the **EDITION TANKMIX** label for timing and direction for preplant and post-harvest burndown applications.



Consult label for specific direction on spray additives, re-entry interval (REI) and personal protective equipment (PPE).

For more information about EDITION TANKMIX Herbicide, contact your local crop protection dealer, visit www.cheminova-us.com or call 800-548-6113.

Always read and follow label directions. ©2013. EDITION is a registered trademark of Cheminova, Inc. Affinity is a registered trademark of E.I. du Pont de Nemours and Company.